

Command Cable UL (LiYCY) Style 2464, 300 V, 80°C,

EMC-preferred type



Technical data

- Special PVC command cable, approved to UL-Style 2464, cores acc. to UL-Style 1061/1729 for AWG 26-20, UL-Style 1007/1569 for AWG 18-16
- **Temperature range**
flexing -10°C to +80°C
fixed installation -20°C to +80°C
- **Nominal voltage** 300 V
- **Test voltage** 1500 V
- **Breakdown voltage** min. 3000 V
- **Minimum bending radius**
fixed 7,5x cable Ø
flexing 15x cable Ø
- **Coupling resistance**
max. 250 Ohm/km

Cable structure

- Tinned copper, fine wire conductors AWG 26-20 gem. ASTM-B 174-95 class J-M, AWG 18-16 gem. ASTM-B 286 conductor make-up to
0,14 mm² = 7x0,162 mm
0,23 mm² = 7x0,202 mm
0,34 mm² = 7x0,254 mm
0,56 mm² = 7x0,32 mm
0,82 mm² = 19x0,235 mm
1,30 mm² = 19x0,31 mm
- Core insulation of special PVC class 43 respectively semirigid acc. to UL-Std. 1581 tab.50.182 and 50.183
- Colour coded to DIN 47100 or international colour code
- Cores stranded in layers with optimal lay-length
- Separator-foil
- Drain wire
- Tinned copper wire braiding, approx. 85% coverage
- Outer sheath of PVC class 43 acc. to UL-Std.1581 tab.50.182
- Sheath colour
black (international colour code)
grey (DIN 47100 - preferred type from stock)

Properties

- The materials used in manufacture are cadmium-free and contain no silicone and free from substances harmful to the wetting properties of lacquers

Tests

- PVC flame retardant acc. to UL VW-1, CSA FT1
- **Conditionally resistant to**
Oil
Solvents
Acids
Lyes

Note

- AWG sizes are approximate equivalent values. The actual cross-section is in mm².
- non-screened analogue types: **command cable UL (LiYY)**, confer page 403

Application

As a flexible interconnecting cable for electronics, control and command technology, as well as in measurement, signal, and pulse technology. Fast and inexpensive contacting by cutting and clamping technology.

EMC = Electromagnetic compatibility

To optimize the EMC features we recommend a large round contact of the copper braiding on both ends.

CE = The product is conformed with the EC Low-Voltage Directive 2006/95/EC.

Part no. Sheath colour	Part no. Sheath colour	No.cores x cross-sec. mm ²	AWG.No.	Outer Ø app. mm	Cop. weight kg / km	Weight app. kg / km	Part no. Sheath colour	Part no. Sheath colour	No.cores x cross-sec. mm ²	AWG.No.	Outer Ø app. mm	Cop. weight kg / km	Weight app. kg / km
grey	black						grey	black					
83254	83976	2 x 0,14	26	3,9	12,6	20,0	83270	83987	2 x 0,23	24	4,3	16,1	20,0
83255	83977	3 x 0,14	26	4,2	13,7	25,0	83271	83988	3 x 0,23	24	4,5	18,9	25,0
83256	83978	4 x 0,14	26	4,4	14,9	28,0	83272	83989	4 x 0,23	24	4,8	23,0	30,0
83257	83979	6 x 0,14	26	5,0	18,9	30,0	83273	83990	6 x 0,23	24	5,4	32,8	40,0
83258	83980	10 x 0,14	26	6,1	29,5	50,0	83274	83991	10 x 0,23	24	6,5	50,9	60,0
83259	83981	12 x 0,14	26	6,3	31,4	53,0	83275	83992	12 x 0,23	24	6,7	59,1	70,0
83260	83982	16 x 0,14	26	6,8	43,9	60,0	83276	83993	16 x 0,23	24	7,4	68,4	90,0
83261	83983	18 x 0,14	26	7,1	52,1	70,0	83277	83994	18 x 0,23	24	7,7	79,5	123,0
83262	83984	24 x 0,14	26	8,0	62,8	100,0	83278	83995	24 x 0,23	24	8,8	97,3	131,0
83263	83985	27 x 0,14	26	8,4	66,3	105,0	83279	83996	27 x 0,23	24	9,0	122,0	160,0
83264	83986	30 x 0,14	26	8,6	70,4	110,0	83280	83997	30 x 0,23	24	9,3	132,0	170,0

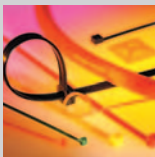
Continuation ▶

Command Cable UL (LiYCY) Style 2464, 300 V, 80°C,**EMC-preferred type**

Part no. Sheath colour grey	Part no. Sheath colour black	No. cores x cross-sec. mm ²	AWG-No.	Outer Ø app. mm	Cop. weight kg / km	Weight app. kg / km
83286	65044	2 x 0,34	22	4,6	18,1	40,0
83287	65045	3 x 0,34	22	4,8	22,2	50,0
83288	65046	4 x 0,34	22	5,1	28,7	60,0
83289	65047	6 x 0,34	22	6,0	45,4	80,0
83290	65048	10 x 0,34	22	7,3	66,1	130,0
83291	65049	12 x 0,34	22	7,5	70,8	140,0
83292	65050	16 x 0,34	22	8,2	88,4	160,0
83293	65051	18 x 0,34	22	8,7	104,1	170,0
83294	65052	24 x 0,34	22	9,9	129,0	220,0
83295	65053	27 x 0,34	22	10,4	138,4	250,0
83296	65054	30 x 0,34	22	10,9	159,0	280,0
83302	65055	2 x 0,56	20	5,1	29,4	50,0
83303	65056	3 x 0,56	20	5,3	39,7	55,0
83304	65057	4 x 0,56	20	5,6	46,1	61,0
83305	65058	6 x 0,56	20	6,6	66,8	90,0
83306	65059	10 x 0,56	20	8,1	93,1	133,0
83307	65060	12 x 0,56	20	8,4	117,4	151,0
83308	65061	16 x 0,56	20	9,5	130,4	190,0
83309	65062	18 x 0,56	20	9,9	151,4	216,0
83310	65063	24 x 0,56	20	11,5	237,0	339,0
83311	65064	27 x 0,56	20	12,0	257,4	374,0
83312	65065	30 x 0,56	20	12,4	297,0	397,0

Part no. Sheath colour grey	Part no. Sheath colour black	No. cores x cross-sec. mm ²	AWG-No.	Outer Ø app. mm	Cop. weight kg / km	Weight app. kg / km
83318	65066	2 x 0,82	18	6,5	39,1	60,0
83319	65067	3 x 0,82	18	6,8	50,0	75,0
83320	65068	4 x 0,82	18	7,4	59,1	90,0
83321	65069	6 x 0,82	18	8,8	89,1	125,0
83322	65070	10 x 0,82	18	10,9	141,4	180,0
83323	65071	12 x 0,82	18	11,2	152,8	220,0
83324	65072	16 x 0,82	18	12,9	184,1	290,0
83325	65073	18 x 0,82	18	13,5	207,2	300,0
83326	65074	24 x 0,82	18	15,6	272,6	450,0
83327	65075	27 x 0,82	18	15,9	289,1	470,0
83328	65076	30 x 0,82	18	16,6	317,4	490,0
83334	65077	2 x 1,3	16	6,9	59,1	90,0
83335	65078	3 x 1,3	16	7,3	74,1	160,0
83336	65079	4 x 1,3	16	7,9	96,4	200,0
83337	65080	6 x 1,3	16	9,6	137,4	290,0
83338	65081	10 x 1,3	16	12,4	191,7	450,0
83339	65082	12 x 1,3	16	12,8	251,7	600,0
83340	65083	16 x 1,3	16	12,8	276,1	650,0
83341	65084	18 x 1,3	16	15,5	364,1	680,0
83342	65085	24 x 1,3	16	18,1	442,4	900,0
83343	65086	27 x 1,3	16	18,7	494,7	990,0
83344	65087	30 x 1,3	16	19,5	521,4	1050,0

Dimensions and specifications may be changed without prior notice. (RN02)



Suitable accessories can be found in Chapter X.

- Cable tie