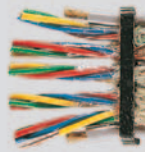


# PVC-flat-CY screened, EMC-preferred type



HELUKABEL PVC-flach-CY 5x4x0,5 QMM / 27101 300/500 V 001042630



## Technical data

- Special PVC-flat cable, screened, adapted to DIN VDE 0283 part 2
- **Temperature range**  
flexing -5°C to +70°C  
fixed installation -40°C to +80°C
- **Nominal voltage**  $U_0/U$  300/500 V
- **Test voltage** 3000 V
- **Breakdown voltage**  
min. 6000 V
- **Minimum bending radius**  
15x cable thickness
- **Radiation resistance**  
up to  $80 \times 10^6$  cJ/kg (up to 80 Mrad)

## Cable structure

- Bare copper-conductor, to DIN VDE 0295 cl.5, fine-wire, BS 6360 cl.5, IEC 60228 cl.5
- Core insulation of special PVC
- Core identification see table below
- Cores screened individually or in bunches
- Copper screened braiding, approx. 85% coverage
- Outer sheath of special PVC
- Sheath colour black (RAL 9005)

## Properties

- Extensively oil resistant
- PVC self-extinguishing and flame retardant acc. to DIN VDE 0482-332-1-2, DIN EN 60332-1-2, IEC 60332-1 (equivalent DIN VDE 0472 part 804 test method B)

## Note

- G = with green-yellow conductor
- x = without green-yellow conductor
- AWG sizes are approximate equivalent values. The actual cross-section is in mm<sup>2</sup>.

## Application

PVC screened flat cables are used mainly as trailing cable for crane installations, floor conveyer systems and shelf control units.

### Installation notes

Cables reels with flat cables must be transported in standing position on the flange. A bending flexibility can be achieved on a plane surface. For this purpose, the corresponding fitting instructions should be followed.

- Put the cable trolly on the guiding rail or upon carrier beam and push them together at the starting point. The distance between the bedding surface of two cable trollys must be wider than the double thickness of a cable-packet.
- During the packeting performance, it must be started with the smaller cross-section which lays on the bedding surface and will be builded successively so that the biggest cross-section is laying on the top.
- Further, be careful of a symmetrical load distribution.
- In case of multicore flat cables with small cross-section, smaller than 2,5 mm<sup>2</sup>, is very critical due to its low tensile stress. In such case, you should add 10% reserve wire for calculation.

**EMC** = Electromagnetic compatibillity

To optimize the EMC features we recommend a large round contact of the copper braiding on both ends.

CE= The product is conformed with the EC Low-Voltage Directive 2006/95/EC.

Part no.	No. cores x cross-sec. mm <sup>2</sup>	Core marking	Outer dimension approx. mm	Cop. weight kg / km	Weight approx. kg / km	AWG-No.
27100	5 G 0,5	Colour coded, DIN VDE 0293	21,0 x 3,4	64,0	140,0	20
27101	5 x 4 x 0,5	Colour coded, (blue, red, green, yellow)	37,4 x 7,2	175,0	280,0	20
27102	8 x 7 x 0,5	Cont. white numbering, DIN VDE 0293	68,6 x 11,7	480,0	1180,0	20
27090	4 G 0,75	Colour coded, DIN VDE 0293	15,0 x 5,0	70,0	147,0	19
27103	4 x 4 G 1	Cont. white numbering	33,5 x 11,0	310,0	625,0	18
26754	4 x 4 x 1	Colour coded, (blue, red, green, yellow)	33,5 x 11,0	310,0	625,0	18
27091	4 G 1,5	Colour coded, DIN VDE 0293	18,7 x 5,9	116,0	210,0	16
27092	8 G 1,5	Cont. white numbering	35,6 x 5,9	217,0	400,0	16
27093	12 G 1,5	Cont. white numbering	52,1 x 5,9	266,0	610,0	16
27094	4 G 2,5	Colour coded, DIN VDE 0293	21,0 x 6,9	170,0	270,0	14
27104	6 G 2,5	Cont. white numbering, DIN VDE 0293	37,4 x 7,2	240,0	320,0	14
27095	4 G 4	Colour coded, DIN VDE 0293	24,5 x 7,7	225,0	400,0	12
27096	4 G 6	Colour coded, DIN VDE 0293	30,1 x 9,2	328,0	520,0	10
27097	4 G 10	Colour coded, DIN VDE 0293	35,8 x 10,5	525,0	840,0	8
27098	4 G 16	Colour coded, DIN VDE 0293	41,3 x 12,6	788,0	1280,0	6
27099	4 G 25	Colour coded, DIN VDE 0293	48,4 x 14,4	1170,0	1800,0	4

Dimensions and specifications may be changed without prior notice. (RJ01)



Suitable accessories can be found in Chapter X.

- Cable Gland - STK-F
- Cable Gland - STS-F